

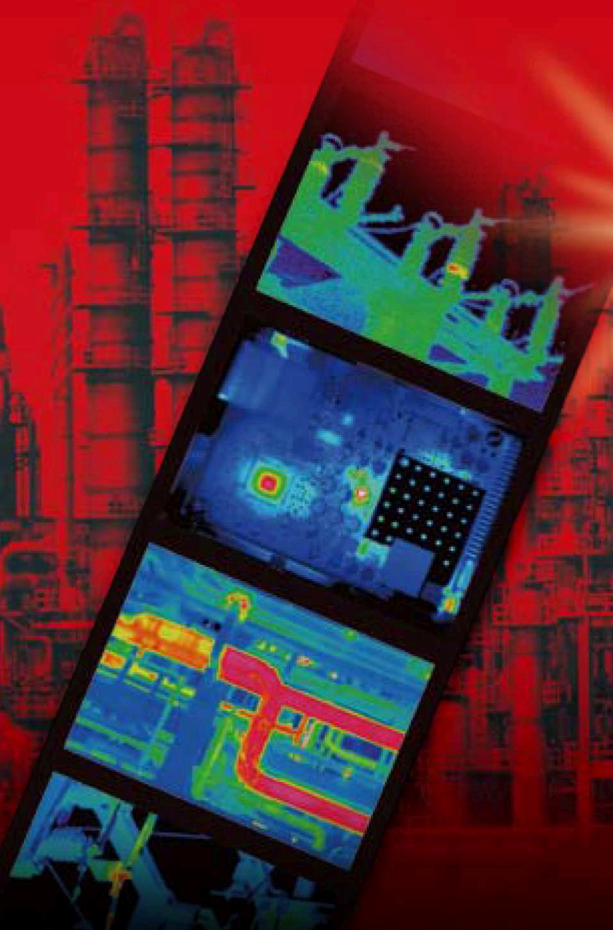


New Series Released!

NEC

Thermo GEAR G120/G100

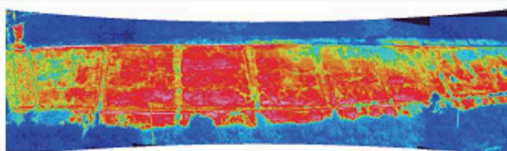
The World's First*¹ Panoramic Thermal Imaging Function with Vibration Alarm Feature!!



Wide-Angle Shot

World's First^{*1}

Thermal Image Panoramic^{*2}



Thermal Image Movie

Direct Recording of Fully Radiometric Images on SD Card (10fps)^{*2}

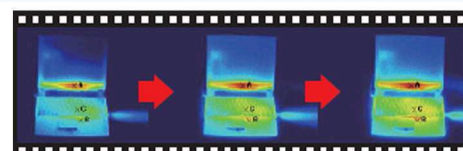
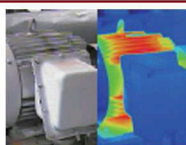


Image Fusion Function

Parallel Display, etc.



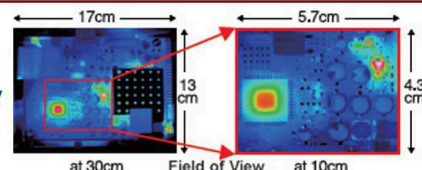
Parallel Display



Blended Display

Macro Shot

10cm Macro Capability (Field of View)



Alarm Function

World's First^{*1}
Vibration^{*2}, Sound & Display

Wide View Angle

Ideal in Short Distances 32°(H) x 24°(V)

3.5 Inch LCD Screen

Flexible 270° Display Supports Easy Shooting Posture

Easy Operation

GUI & Joystick for Intuitive Operation, Auto Focus/Level Sense

Newly Developed Image Processor

Split Screen Alpha Blending Edge Enhancement

Data Storage Format

Radiometric JPEG^{*3}

*1 World's First (Panoramic Thermal Image Shooting Function), (Vibration Alarm Function) (Surveyed by NEC Avio at the end of December 2009) *2 Installed only in G120

*3 Dedicated Software (NS9500LT) is provided for radiometric data analysis while IR/Visible JPEG Images can be displayed by any ordinary viewer software

NEC Avio Infrared Technologies Co., Ltd.

Contact: SOLTEC Corporation • 12977 Arroyo Street • San Fernando, CA 91340
Tel: (800) 423-2344 ext. 411 • (818) 365-0800 ext. 411 • Fax: (818) 365-7839
Sales@SoltecCorp.com • www.SoltecCorp.com



ISO9001
JQA-1598



ISO14001
JQA-EM0260
HEAD OFFICE

Specifications

Model	G120	G100	
Basic Performance	Measuring Range	-40°C to 500°C High Temperature Range: 350°C to 1500°C (Option)	
	Resolution (NETD)	0.08°C (at 30°C, 60 frames/sec)	
	Accuracy	±2°C or ±2% of Reading, whichever is greater	
	Infrared Detector	Uncooled Focal Plane Array	
	Thermal Image Pixels	320(H) x 240(V) pixels	
	Spectral Range	8 to 14µm	
	Frame Rate	60 frames/sec	
	Field of View	32°(H) x 24°(V) (Standard Lens f = 14mm)	
	Spatial Resolution (I.F.O.V.)	1.78mrad	
	Focusing Range	10cm to Infinity (Standard Lens) (For Temperature Accuracy: 30cm to Infinity)	
A/D Resolution	14bits		
Operation/ Image Quality Improvement	Automatic Focus	Provided	
	Setting of Level/Sense/Span	Auto/Manual	
	Operation Support Function	Setting of Item/Each Function/Status is displayed by icon	
	Multiple Language Menu	16 Languages: English, Danish, Dutch, Finnish, French, German, Italian, Japanese, Korean, Norwegian, Portuguese, Russian, Spanish, Swedish, Simplified Chinese and Traditional Chinese	
	Correcting Function	Correction for Emissivity, Distance, Environmental Reflection and Background	
	Averaging	Provided	
	Median Filter	Provided	
	Edge Enhancement	Provided	Not Included
	Thermal/Visual Image Fusion Display	Fusion and Picture-in-Picture with Alpha Blending, and Split-Screen Display of Thermal/Visual Image	
	Color Palette	Rainbow, Iris, Brightness, Color, Hot Iron, Hot Black, Hot White	
Display Performance	Gradation	256, 16 and 8 tones	
	Thumbnail Display	9 Image Display	
	Digital Zoom	1 to 4 times	
	Panoramic Shooting Function	Provided (Scan Synthesis)	Not Included
	Multipoint Temperature Display	5 Points	
	Multipoint Emissivity Correction	5 Points	
	Emissivity Back Calculation Function	Provided	
	Temperature Difference Between Two (2) Points	Provided	
	Temperature Analysis Function in Assigned Region	Temperature Display of Maximum/Minimum/Average in Assigned Region (for up to 5 boxes)	
	Profile	Horizontal/Vertical	
Measurement Performance	Temperature Search Function	Searching Maximum/Minimum Temperature, Automatic Display of each position	
	Alarm Function	Mode(s): Alarm Sound, Alarm Display, Vibration (G120 only), Color Alarm ON/OFF, Setting Determination Temperature, External Alarm Output	
	Storage Device	SD Card, corresponding to SDHC	
	Thermal Image Movie	Provided (10fps) Storage in SD Card Not Included	
	Still Image	Radiometric JPEG	
	Interval Image Capturing	3sec to 60min, Automatic Recording of Thermal Image	
	Event Trigger Recording	Provided	
	USB 2.0	Mass Storage Function	
	Alarm Output	Contact Closure. No Voltage.	
	Video Output	NTSC/PAL Changeover (Simultaneous use is unable with LCD)	
Data Storage	Laser Pointer	Provided (Class - 2 Red Color)	
	Visual Camera	2 Mega pixels CMOS Camera	
	LED Light	Provided	
	Voice Annotation	30sec Recording/Replay per Image	
	Text Annotation	Annotate up to 256 characters with each Thermal Image. Import characters from SD Card.	
	Display Unit	3.5 inch Color LCD Monitor (320 x 240) with Tilt Function and Brightness Control Function	
	PC Software	InfReC Analyzer NS9500LT (Limited Function Version), provided as Standard Accessory	
	Standard Accessories	Hard Case, Battery Pack, Battery Charger, AC Adaptor, Wristband, SD Card, USB Cable, Operation Manual, Software (see above)	
	Rechargeable Battery	Lithium-ion Battery Pack (2,500mAh); 4 Hours of Continuous Use	
	AC Power (AC Adapter)	100V to 240VAC, 50/60Hz	
Power	Power Consumption	4.3W (typical)	
	Operating Temperature/Humidity	-15°C to 50°C, 90%RH	
	Vibration/Shock	29.4m/sec ² (3G)/294m/sec ² (30G)	
	EMC	Compliant to CE (Class-A)	
	Dust-Proof/Splash-Proof Construction	Protection Code: IP54 Equivalent	
	Dimensions	Approx. 212mm (H) x 76mm (W) x 138mm(D) (excluding projections)	
	Weight	Approx. 800g (including Battery Pack)	

Contact:

SOLTEC®

12977 Arroyo Street
 San Fernando, CA 91340-1548
 Toll Free: (800) 423-2344 Ext. 411
 Direct: (818) 365-0800 Ext. 411
 Fax: (818) 365-7839
 Sales@SoltecCorp.com
 www.SoltecCorp.com

PC Software

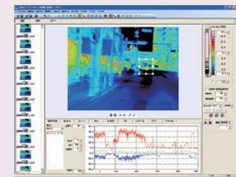
InfReC Analyzer NS9500 (Optional)

(NS9500 Lite: Standard Accessories)

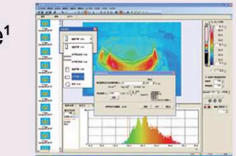
The Thermal Image Processing/Report Generator Software is designed for ease of operation with simple to read menus and icons.

Features

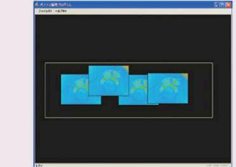
- ◆ Easy Report Generation (MS Word/MS Excel Format)
- ◆ Rich Processing Functions
 - Fusion Display of Thermal Image/Visual Image
 - Subtracting Function for Thermal Image
 - Panoramic Composite Function for Thermal Image¹
 - Radiation Heat Quantity Analysis¹
 - Length Measuring/Area Calculation Function¹ for Thermal Image
 - Trend Graph Display¹
 - Line Profile Display
 - Drawing Function for Designated Point/Line/BOX/Circle¹/Polygon Shaped¹
 - Analysis for Max/Min/Peak Temperature



Trend Graph Display



Radiation Heat Quantity Analysis



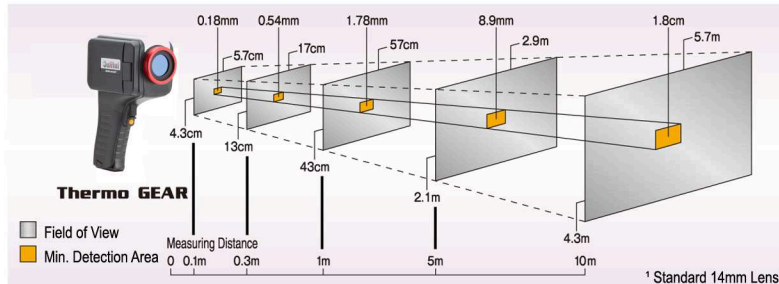
Panoramic Synthesis Function for Thermal Image

¹ NS9500 only

Options

Options	Model	Specifications/Remarks
1500°C High Temperature Range	IRR-HG100B	350°C to 1,500°C
2x Telephoto Lens	IRL-TX02A-B	16°(H) x 12°(V) 0.89mrad (f = 28mm)
Rechargeable Battery Pack	T2UR18650F5928B	2,500mAh, 4 Hours of Continuous Use (Typical)
Battery Charger	NC-LSC05-110V / NC-LSC05-220V	110V or 220V
LCD Hood	IRU-F01A	
Video Cable	MV-320MP	3.5mm plug, 2m
Tripod (Small)	U9800	
InfReC Analyzer Standard	NS9500STD-B	PC Software
Portable Power for Longer Operation	TVB-C501	Case for 2 Extra Batteries (Battery not Included)
Two (2) Year Warranty	IRS-GG100A-B	

Dimensions of Measuring Distance and Field of View¹



¹ Standard 14mm Lens

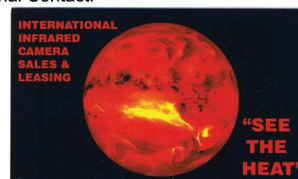
InfReC InfraRed Camera
 InfReC is the coined abbreviation word of "InfraRed Camera" and also has the meaning of "The Device Bringing-in Infrared Information". Our product research and development is targeted at improving the quality of life by protecting people and simplifying their daily tasks while measuring temperature, controlling environments, enhancing security, etc.

- ◆ Company names, merchandise names listed on this brochure are brand or trade mark of each company.
- ◆ Listed Specifications/Design, etc., may be subjected to change for improvement without notice. Printed color images may differ slightly from actual product color image.

CAUTIONS & WARNINGS

- Before using this product, please carefully read the provided Operation Manual "WARNING" & "CAUTION" section to ensure proper operation.
- Please do not place this product in high temperature, high humidity or high inert gas environments..

Additional Contact:



Jake Giacomelli
 Managing Director
 Level II Thermographer
 A.M.I.A Board Qualified Medical Thermographic Technician
 International Infrared Camera Sales & Leasing Ltd.
 P.O. Box 66711
 Stony Creek, Ontario
 Canada / L8G 5E6
 Tel: 905-643-8111
 Fax: 905-930-7740
 Email: Cameras@InfraredSales.com