

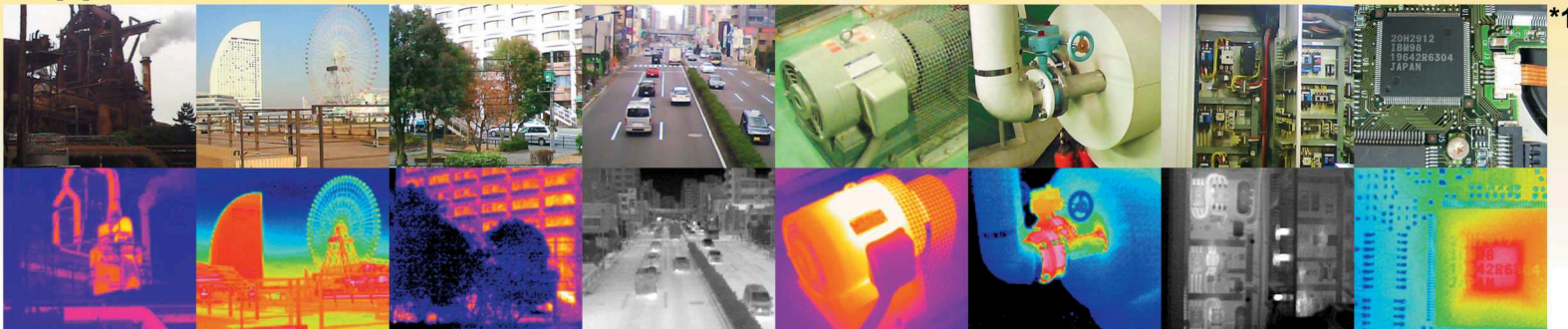
**NEW**

# Thermo Gear G30

**Infrared Thermal Imager for General Inspections**  
**Ideal for Predictive/Preventive Maintenance & Building Assessment**  
**User Friendly Operation with Intuitive GUI Navigation**



## Applications



<p><b>Simultaneous Digital Image with Temperature Overlay for quick Measurements</b></p>	<p><b>Multi-Lingual Graphical User Interface with Joystick for Easy Operation</b></p>	<p><b>Li-Ion Rechargeable Battery Lasts up to 7 Hours Lightweight: Approx. 500g (1.1lb)</b></p>
<p><b>Fully Radiometric High Quality IR Images</b></p>	<p><b>SD Card Direct Recording in JPEG Format for Easy Reporting</b></p>	<p><b>Dust/Splash Proof with IP54 Rated Construction</b></p>
<p><b>Wide Field of View 28°(H) x 21°(V)</b></p>	<p><b>Focus Free (1.3m~) Auto Level-Sense</b></p>	<p><b>Fusion, Analysis and Report by PC Software Included</b></p>
<p><b>Min Focus Distance: 10cm**</b></p>	<p><b>Alarm and Isotherm</b></p>	<p><b>Two (2) Year Warranty</b></p>

NEC Avio Infrared Technologies Co., Ltd.

Contact: SOLTEC Corporation • 12977 Arroyo Street • San Fernando, CA 91340-1548  
 Tel: (800) 423-2344 Ext. 411 • (800) 365-0800 Ext. 411 • Fax: (818) 365-7839  
 Sales@SoltecCorp.com • www.SoltecCorp.com

## Specifications

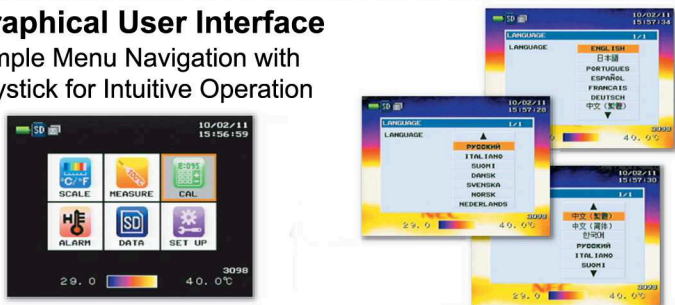
Measuring Range	-20° to 350°C
Thermal Sensitivity (NETD)	0.2°C (at 30°C) 0.1°C (with S/N improvement) (at 30°C)
Infrared Detector	Uncooled Focal Plane Array, 160 x 120 pixels
Spectral Range	8 to 13µm
Frame Rate	8.5 frames/sec
Field of View	28°(H) x 21°(V)
Spatial Resolution (IFOV)	3.1mrad
Focus Distance	10cm to Infinity*1 (For Temperature Accuracy: 50cm to Infinity)
Focus	Manual (Focus Free beyond 1.3m)
Accuracy	±2°C or ±2%, whichever is greater
Visible Light Camera	1.3M pixels CMOS <sup>2</sup> (Focal Distance: 50cm~)
Temperature Display	Center, Max/Min, Moveable (1 point) and ΔT
Emissivity Correction	Yes
Background Compensation	Yes
Isotherm	Yes
Alarm	Display Alarm, Color Alarm
Image Improvement	Yes (Averaging, Median Filter)
Color Palette	Four (4) Types: Rainbow, Iron, Iris, BW
Video Output	NTSC/PAL (RCA)
Image Storage Format/Medium	Radiometric JPEG/SD Card
PC Interface	USB2.0 (Mass Storage Function)
Software	InfReC Analyzer NS9500LT
Graphical User Interface's Supported Language	English, French, Spanish, German, Italian, Portuguese, Russian, Finnish, Danish, Norwegian, Swedish, Dutch, Chinese (Traditional, Simplified), Korean and Japanese
Battery Type/Operating Time	Li-Ion Rechargeable Seven (7) hours with battery status display (typical)
Operating Temperature	-15°C to +50°C, 90% RH or less
Vibration/Shock	29.4m/sec <sup>2</sup> (3G)/ 294m/sec <sup>2</sup> (30G)
Dimensions	Approx. 80(W) x 209(H) x 123(D)mm
Dust-Splash Proof	IP54
Weight	Approx. 500g (including batteries)
Standard Accessories	AC Adapter, Battery Charger, Rechargeable Li-Ion Battery, SD Card (1GB), USB Cable, Hand Strap, Software, Operation Manual and Carrying Case
Optional Accessories	Analysis Software (NS9500STD), Tripod, etc.

\*1 Min focus distance (10cm): Applicable to IR Camera. The visible image sample of printed circuit board on the front is not taken by this model.

\*2 Interpolation made to visible image saved.

## Graphical User Interface

Simple Menu Navigation with Joystick for Intuitive Operation



Contact:

# SOLTEC®

12977 Arroyo Street  
San Fernando, CA 91340-1548  
Toll Free: (800) 423-2344 Ext. 411  
Direct: (818) 365-0800 Ext. 411  
Fax: (818) 365-7839  
Sales@SoltecCorp.com  
www.SoltecCorp.com

## PC Software

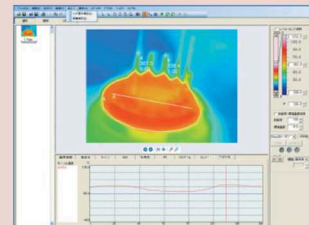
### InfReC Analyzer NS9500

**NS9500 Lite: Included (NS9500STD Optional)**  
Thermal Image Processing and Report Generator Software  
Easily identifiable menu system for user-friendly operation

#### • Fusion Display of Thermal/Visual Image

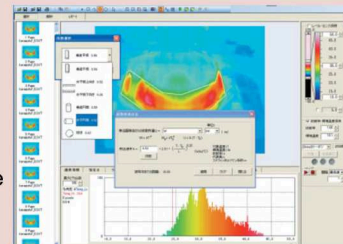
#### • Easy Report Generation (MS-WORD/MS-EXCEL Format)

- Line Profile Display
- Analysis for Max/Min/Peak Temperature
- Drawing Function for Designated Point/Line/BOX



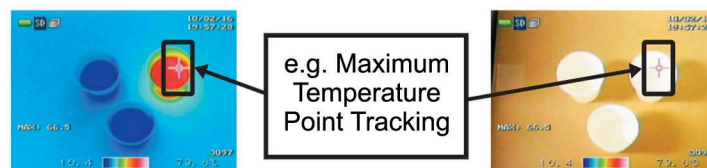
**Optional NS9500STD** also features additional functions:

- Drawing Circle/Polygon Shape
- Radiation Heat Quantity Analysis
- Length Measuring/Area Calculation
- Trend Graph Display
- Subtracting Function for Thermal Image

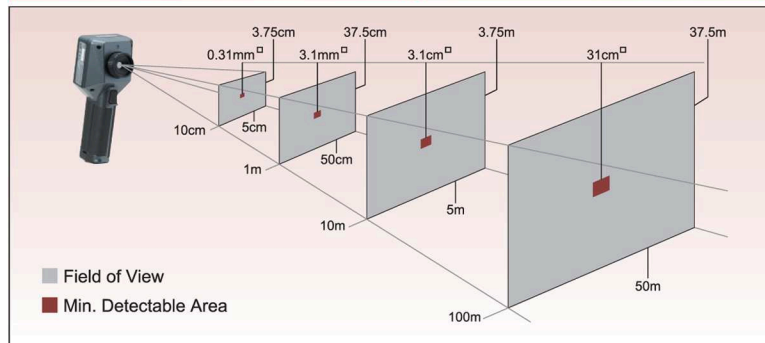


## Visible Image with Temperature Overlay Function

All temperature data is overlaid on visible image in real time.



## Dimensions of Measuring Distance and F.O.V



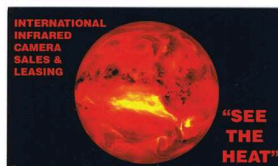
**InfReC** InfraRed Camera  
InfReC is the coined abbreviation word of "InfraRed Camera" and also has the meaning of "The Device Bringing in Infrared Information". Our product research and development is targeted at improving the quality of life by protecting people and simplifying their daily tasks while measuring temperature, controlling environments, enhancing security, etc.

- ◆ Company names, merchandise names listed on this brochure are brand or trade mark of each company.
- ◆ Listed Specifications/Design, etc., may be subjected to change for improvement without notice. Printed color images may differ slightly from actual product color image.

## CAUTIONS & WARNINGS

- Before using this product, please carefully read the provided Operation Manual "WARNING" & "CAUTION" section to ensure proper operation.
- Please do not place this product in high temperature, high humidity or high inert gas environments..

Additional Contact:



Jake Giacomelli  
Managing Director  
Level II Thermographer  
A.M.I.A Board Qualified Medical Thermographic Technician  
International Infrared Camera Sales & Leasing Ltd.  
P.O. Box 66711  
Stony Creek, Ontario  
Canada / L8G 5E6  
Tel: 905-643-8111  
Fax: 905-930-7740  
Email: [Cameras@InfraredSales.com](mailto:Cameras@InfraredSales.com)