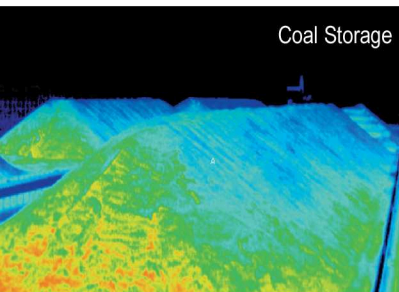


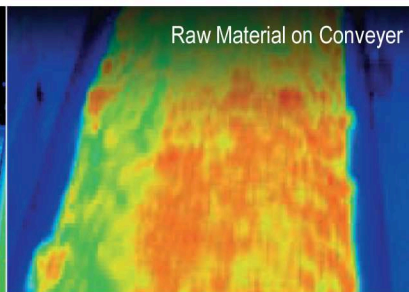
NEW

NEC

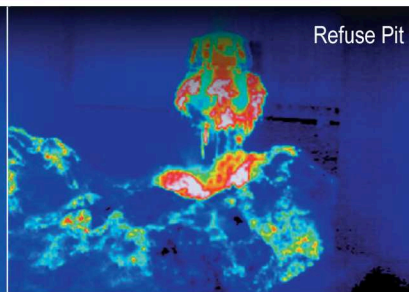
Temperature Monitoring System **SS320** With Multiple Thermal Imagers



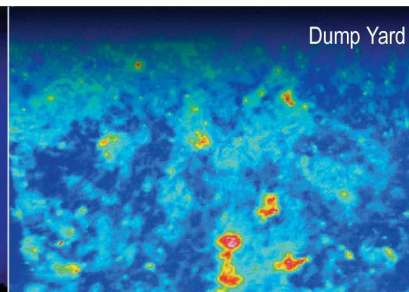
Coal Storage



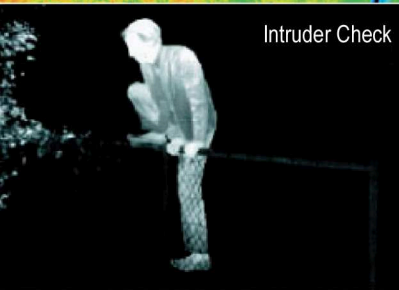
Raw Material on Conveyor



Refuse Pit

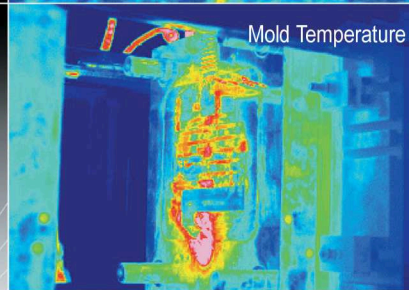


Dump Yard



Intruder Check

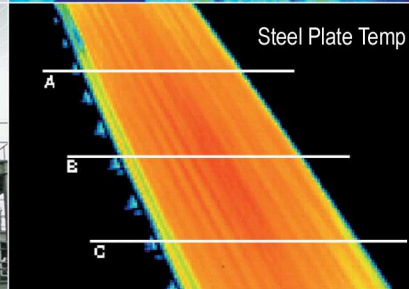
As your third eye, SS320 helps you to manage operation with security, safe work environment and power saving at various scenes.



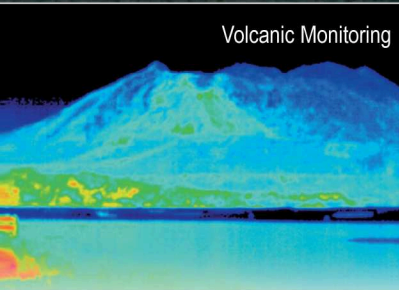
Mold Temperature



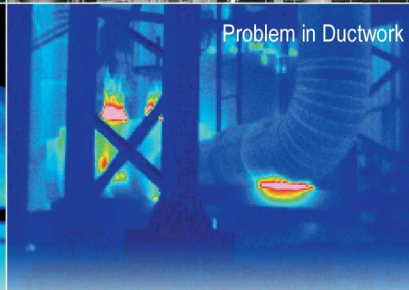
Marine Security



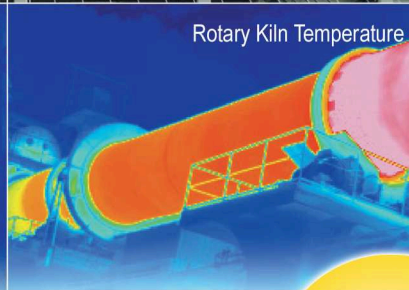
Steel Plate Temp



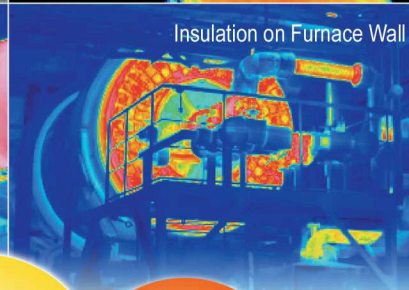
Volcanic Monitoring



Problem in Ductwork



Rotary Kiln Temperature



Insulation on Furnace Wall

Various Applications

Monitor temperature of manufacturing facilities, environmental monitoring, quality control, etc.

Environmentally Resistant

Protective housing is standard. Select Sealed type or Air-Cooled type.

Optional Wide-Angle Lenses

Three (3) types of wide-angle lenses (60°, 78°, & 90°) are available for effective monitoring. 30° Standard.

Easy Mounting

The control unit mounts on wall or can also be used on desktop.

Monitoring Software Included

High performance control software provides optimized 24 hour monitoring.

All-In-One System

SS320 includes infrared camera with housing, control unit and control/measurement software for easy setup and use.

Detect Fire at Recycling Plant

Land & Marine Security

Detect Overheating at Power Generation Plant

Production Control at Refinery

Monitor Public Disposal Site

Quality Control of Steel Plate

NEC Avio Infrared Technologies Co., Ltd.

SOLTEC Corporation • 12977 Arroyo Street • San Fernando, CA 91340-1548
Tel: (800) 423-2344 Ext. 411 • (800) 365-0800 Ext. 411 • Fax: (818) 365-7839
Sales@SoltecCorp.com • www.SoltecCorp.com



Main Unit Specifications

Model	Control Unit (SS320), Infrared Camera (SS32-201/SS32-202)
Detector	Uncooled focal plane array (Microbolometer)
Thermal Image Pixels	320 (H) x 240 (V) pixels
Spectral Range	8 to 13µm
Measuring Range	-40 to 500°C (Range 1: -40 to 120°C, Range 2: 0 to 500°C)
Resolution	0.08°C (at 30°C, 60 frames/sec, Range 1)
Field of View	30° (H) x 22.7° (V) with standard lens
I.F.O.V	1.7mrad (with standard lens)
Accuracy	±2% or ±2°C of reading, whichever is greater
Communication Interface	Ethernet
Data Processing Functions (by Unifizer System Software)	<i>Number of Cameras:</i> Connect up to 4 cameras <i>Frame Rate:</i> 200mS (when not recording data) <i>Monitoring Area:</i> Select Rectangle, Polygon, Line or Point <i>Computations:</i> Maximum, Minimum, Average, Custom Formula <i>Display:</i> Thermal Image, Trend Graph, Digital Value <i>Alarm Output:</i> On Screen, Contact, Thermal Image File <i>Digital Input:</i> Image Storage, Monitor Start/Stop <i>Digital Output:</i> Temperature Alarm 8 points, System Status 2 points <i>Analog Output:</i> 2 points (1 to 5V, ±10V, ±5V selectable)
Power Consumption	Infrared Camera: 13W (Max) DC12V, Control Unit: 120W (Max) AC115V
Operating Temperature & Humidity	Infrared Camera with Sealed Case: 0 to 40°C, 80%RH or less (no condensation) Infrared Camera with Air Cooled Case: 0 to 50°C, 80%RH or less (no condensation) Control Units: 0 to 40°C, 30 to 80%RH (no condensation)
Dust-Proof/Splash-Proof	IP54 Equivalent (IR Camera with case)

Optional Lenses

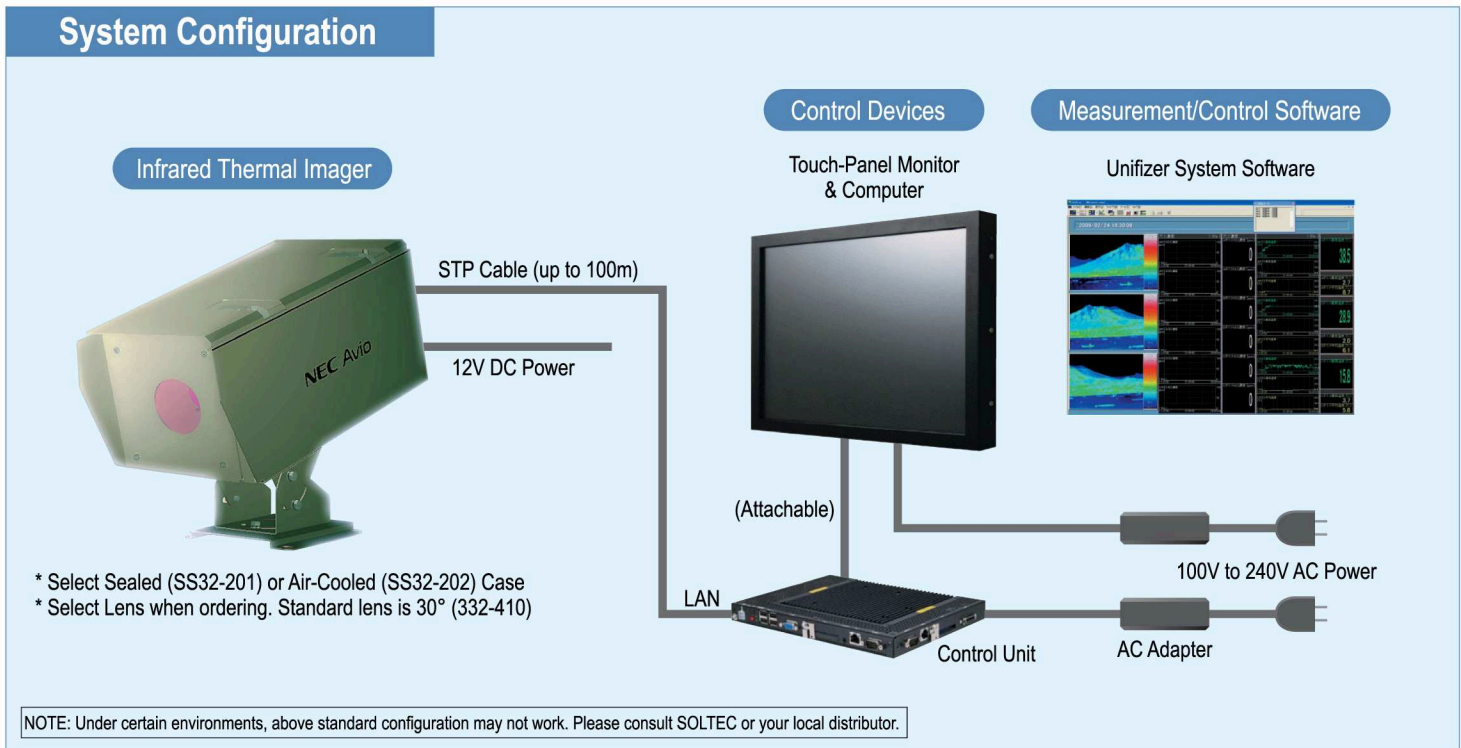
Model	Field of View	I.F.O.V
30° Standard (SS32-410)	30.0° (H) x 22.7° (V)	1.7 mrad
60° Wide-Angle (SS32-413)	60.0° (H) x 45.4° (V)	3.4 mrad
78° Wide-Angle (SS32-414)	78.0° (H) x 59.0° (V)	4.4 mrad
90° Wide-Angle	90.0° (H) x 68.1° (V)	5.1 mrad

Confirm a lens when ordering SS320. Lenses are not interchangeable.

Other Options

Model	Descriptions
Power Supply (SS32-311)	Provides 12VDC to Infrared Camera
Switching Hub (SS32-312)	Connects multiple cameras to Control Unit
Monitor Stand (SS32-313)	Touch-Panel Monitor Stand to desktop for use
Attachment for PC and Monitor (SS32-314)	Bracket for attaching touch-panel monitor to computer
Terminal Block for Digital Input/Output (SS32-351)	Required for digital input and output
Terminal Block for Analog Output (SS32-352)	Required for analog output
Ethernet Cable (SS32-321, 322, 323)	SS32-321 Length: 20m SS32-322 Length: 50m SS32-323 Length: 100m
Video Cable (SS321-331, -332, -333)	SS32-331 Length: 20m SS32-332 Length: 50m SS32-333 Length: 100m

System Configuration



Contact:

SOLTEC®

NEC Avio Infrared Technologies Co., Ltd.

12977 Arroyo Street
 San Fernando, CA 91340-1548
 Toll Free: (800) 423-2344 Ext. 411
 Direct: (818) 365-0800 Ext. 411
 Fax: (818) 365-7839
 Sales@SoltecCorp.com
 www.SoltecCorp.com



CAUTIONS & WARNINGS

Before using this product, please carefully read the provided Operation Manual "WARNING" & "CAUTION" section to ensure proper operation.

Additional Contact: